

ALLDAY
& MILLER



Newtown Road, UB9 4BE
£2,400

3 1 2 D



Newtown Road, UB9 4BE

£2,400

- Three Double Bedrooms
- Immaculate Condition Throughout
- Walking Distance to Uxbridge Town Centre
- Utility Room
- 1472 sq ft
- Semi Detached
- Sought After Location
- Off Street Parking

Description

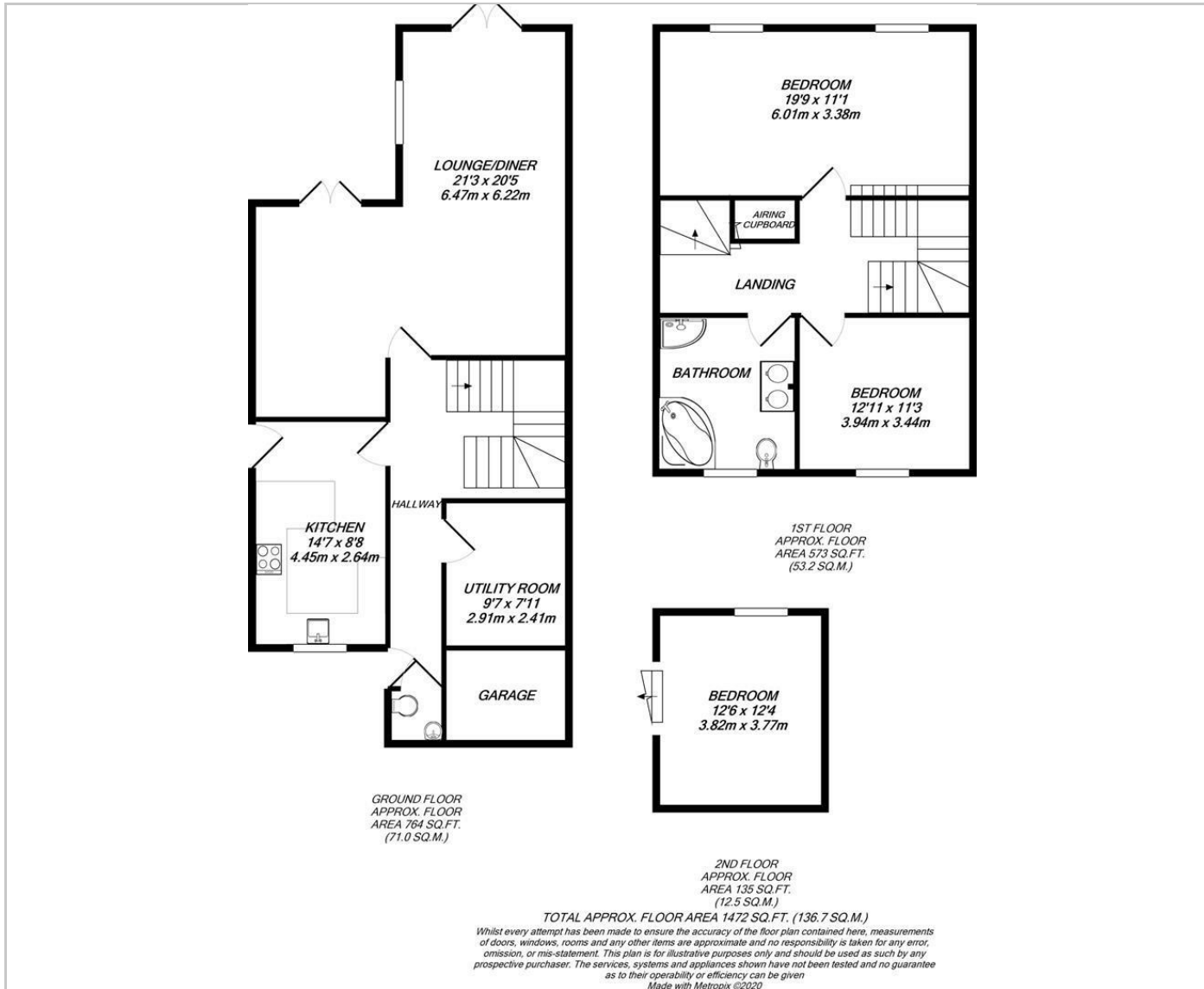
The accommodation features an exceptional kitchen/breakfast room and a superb open-plan lounge/dining area overlooking the garden, complemented by a utility room and garage on the ground floor. The first floor has been thoughtfully reconfigured to create an impressively spacious layout. A loft room has been added and is currently used by the owners as a third bedroom. The principal bedroom measures an impressive 19', while the second bedroom is a generously sized double at 12' x 11'. This is a truly unique and well-proportioned home, ideally located just 0.8 miles from Uxbridge tube station.

Situation

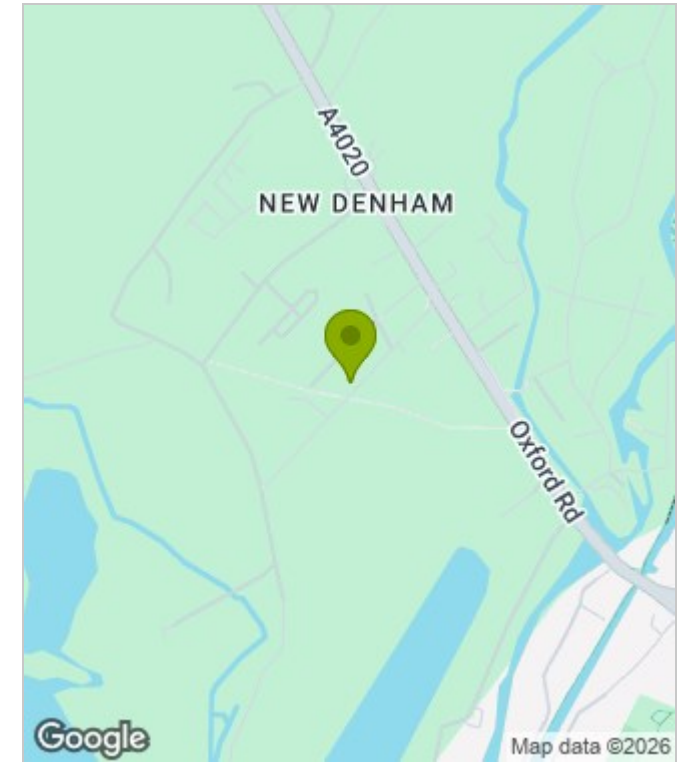
Newtown Road is a popular residential road nestled away just off the Oxford Road in New Denham. The property is positioned just a short stroll from Uxbridge Town Centre and all its amenities, including multiple shopping facilities, restaurants, bars and the Metropolitan/Piccadilly line tube station. The A40/M40 and M25 are within easy reach along with Hillingdon Hospital, Brunel University, Stockley Park and Heathrow. As the property is just within the county of Buckinghamshire, it allows access into the Buckinghamshire school system, which includes grammar schools.



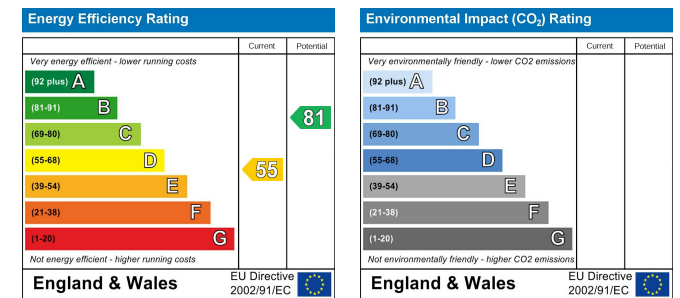
Floor Plans



Area Map



Energy Performance Graph



These particulars, whilst believed to be accurate are set out as a general outline only for guidance and do not constitute any part of an offer or contract. Intending purchasers should not rely on them as statements of representation of fact, but must satisfy themselves by inspection or otherwise as to their accuracy. No person in this firm's employment has the authority to make or give any representation or warranty in respect of the property.